

SuperFast® Hurricane

Installation Instructions for SuperFast® Hurricane

I. Before You Start / Preparations

**Please read all the instructions before you begin the installation.
Improper installation will void warranty.**

Important

All wood based products, even those specifically designed to have increased resistance to moisture, are hygroscopic (they will react to the moisture in the environment) and as a result will expand or contract accordingly. All sources of under floor moisture must be rectified prior to the installation of the floor. Any construction dampness must be completely dry. Although this product has been designed with bathroom installation in mind it is not waterproof and excessive wetting is to be avoided and water spillages dried immediately. At no time should standing water be left on the floor. It is important that you check each plank for any manufacturing defects. Do not install. Return the product or contact the manufacturer at (404) 794-3688.

- Calculate the room surface prior to installation and plan an extra 10% of flooring for waste.
- Keep the boards in room temperature for at least 48 hours in unopened package before you start the installation. The room temperature must be between 18° and 25 °C (65-78 °F) before and during installation. For floor surfaces exceeding 400m (4350 ft)and or lengths exceeding 20m (66 ft) and overlaps to new rooms and floor surface which do not join symmetrically, use expansion joints to divide the floor sections.
- Inspect your subfloor before you begin. It must be clean, dry (max. 2.5% moisture content - CM method) and level to 5mm (3/16") within a 3 meters (10 foot) span.
- If this flooring is intended to be installed over an existing wooden floor, it is recommended to repair any loose boards or squeaks before you begin installation.
- With a floating floor you must always ensure you leave a 1cm (1/2") gap between walls and fixtures such as pipes and pillars, stairs, etc. Tip: When installing around pipes, drill the holes 20 mm (3/4") larger than the diameter of the pipes.
- It is required to install a moisture barrier. Underlayments thicker than 1/8" are not advised. (Note: some collections may have a pad factory pre-attached to the back of planks, so no additional pad is needed.) If the laminate flooring is being installed over concrete subfloors, a minimum 0.15mm (6 mil) plastic poly sheeting should be used as a moisture barrier.
- Relative Humidity Levels of your room should be maintained at 40-65 % at 18-24 °C (65° - 75°F).

- Decide the installation direction. It is recommended to install the length direction of the planks parallel to the main light direction.
- Measure the area to be installed: The board width of the last row shall not be less than 50mm (2"). If so, adjust the width of the first row to be installed. When measuring, take the free gap requirement of about 10mm (1/2") of the floor perimeter into account. In narrow hallways, install the floor parallel to the lengthways.
- Inspect your laminate flooring. No claims on surface defects will be accepted after installation.
- If installing over an electrical radiant heating system, temperatures must not exceed 29°C (85°F). Electrical radiant heating systems must be recommended for laminate flooring by the manufacturer.
 - Below instructions are for radiant heating systems using water.
 - Ensure the radiant heat surface temperature never exceeds 29°C (85°F). Before installing over newly constructed radiant heat systems, operate the system at maximum capacity to force any residual moisture from the cementitious topping of the radiant heat system. The maximum moisture content of the screed is 1.5% (CM method). Shut down the floor heating at least 48 hours prior to installation. Make sure that the temperature in the room is at least 15°C (60 °F) during installation. It is recommended that the radiant heat be applied in a gradual manner after installing the laminate floor. Refer to the radiant heat system's manufacturer recommendations for additional guidance.

Tools and supplies required:

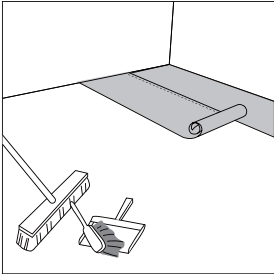
Foam Underlay less than 3mm (if not pre-attached) • Spacers • Saw • Adhesive Tape • 4mil (or thicker) polyurethane vapor barrier for crawl space and concrete floor installations. • Rubber Mallet • Ruler • Pencil • Tape Measure • Utility Knife • Construction Adhesive

For Bathroom, Laundry Room or Commercial Installations:

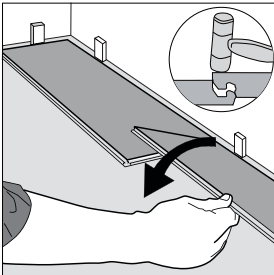
It is important to seal any cut planks to ensure superior and warranted performance. When a flooring plank is cut to fit (either end cuts or side cuts), a sealant is always required around the perimeter of the installation.

- Once the flooring installation is completed, apply Silicone around the perimeter (in the expansion space at walls). This should also include any other areas such as islands, doorways, columns, etc. where the laminate flooring planks have been cut to fit.

II. Install



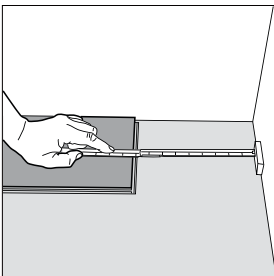
1. After thoroughly cleaning the subfloor, you should install a foam underlay (unless your product has a pre-attached pad). Run the foam underlay in the same direction as the flooring planks. The underlay should be butted side-by-side with no overlap. Tape seams together. If you are installing over a concrete subfloor, a 6-mil poly (plastic sheeting) is to be installed under the foam underlay. (Many foam underlays already have this plastic sheeting pre-attached).



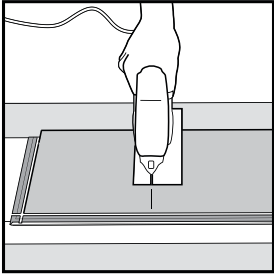
2. Begin laying in the left-hand corner. Place the floorboard 10 (1/2") from the left wall. Use spacers between the wall and the floorboard.

Second Plank, first row. Drop the plank and gently press down the end with a rubber mallet so it firmly locks into the previous plank until both are at the same height. Make sure both planks are perfectly aligned.

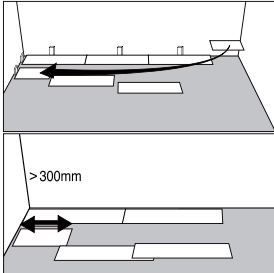
NOTE: If you notice both planks aren't at the same height or are not well locked together, please follow the disassembling instructions at the bottom of the page, disassemble and check if any debris stuck inside the lock is obstructing.



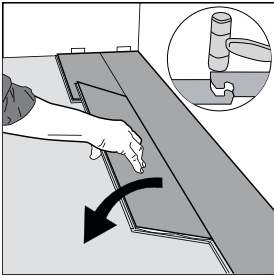
3. At the end of the first row, leave an expansion gap of 10mm (1/2") to the wall and measure the length of the last plank to fit.



4. If cutting with any power saw, the laminate surface should be turned down. If cutting with a handsaw, the laminate surface should be face up.

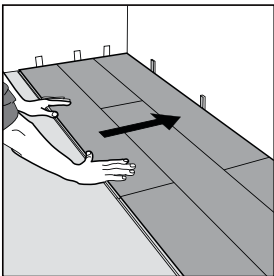


5. Start the second row with the leftover cut part of the last plank of the previous row. This small plank should measure at least 30cm (12"). Otherwise, use another plank that should be cut in two, make sure the plank measures at least 30cm (12").

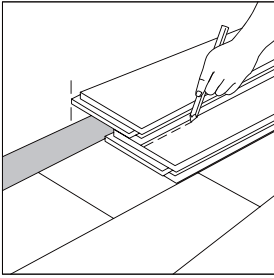


6. Click the long side of the plank into the previous row and place it tight to the short end of the previous plank. Drop the plank and gently press down the end with a rubber mallet so it firmly locks into the previous plank until both are at the same height. Make sure both planks are perfectly aligned and locked into the previous row leaving no gap (refer to "Helpful Hint" at the bottom of the page).

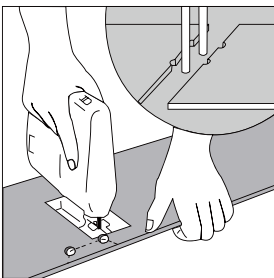
NOTE: If you notice both planks aren't at the same height or are not well locked together, please follow the disassembling instructions at the bottom of the page, disassemble and check if any debris stuck inside the lock is obstructing.



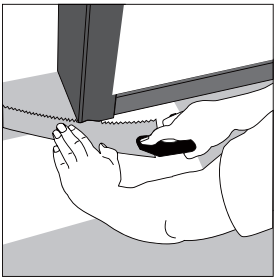
7. After 2-3 rows. Adjust the distance to the front wall by leaving an expansion gap of 10mm (1/2"). Always ensure that the end joints are staggered at least 30cm (12"), both when in the same row as when from one row to the next one.



8. To lay the last row: position a loose board exactly on top of the last row laid. Place another board on top, with the tongue side touching the wall. Draw a line along the edge of this boards, to mark the first board. Cut along the edge of this board to mark the first board. Cut along this line to obtain of the required width. Insert this cut board against the wall. The last row should be at least 50mm (2") wide. The spacers can then be removed.

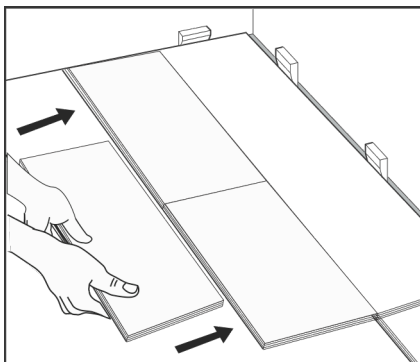


9. Holes for pipes: measure the diameter of the pipe and drill a hole that is 20mm (7/8") larger. Saw off a piece as shown in the figure and lay the board in place on the floor. Then lay the sawed-off piece in place.



10. Door molding and skirting: lay a board (with the decorative side down) next to the door molding and as shown in the figure. Then slide the floorboard under molding.

Helpful Hint

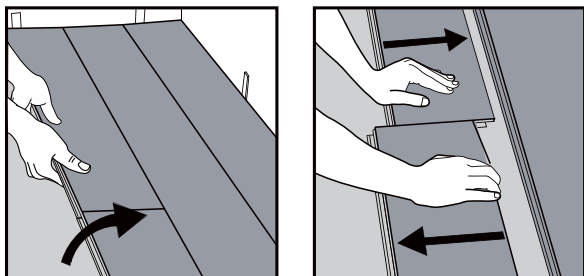


When installing each new row, take a full loose plank and use the long side to tap against the prior row to ensure no gapping.

III. Maintenance

Clean the floor regularly with a vacuum cleaner or dry mop. If necessary, the floor may be cleaned with a wet mop and a laminate cleaner. Avoid using too much water. To protect the floor from sand we recommend you to use the doormats at entries (but do not use mats with a rubber backing).

IV. Disassembling



Separate the whole row by lifting it up delicately at an angle. To separate the planks, leave them flat on the ground and slide them apart.

For Customer Service Call: (404) 794-3688